



ALPHAREN CORE-Integrator (ARINT) System

(c) 2021 RENware Software Systems. RESTRICTED only for project internal use

## Service anatomy

Product 0000-0156 0.0 document control:

- 210728 me new doc
- 230817 me last update

**Table of contents:**

- [Service anatomy](#)
  - [Service skeleton](#)
    - [Detailed operations](#)
  - [Deployment](#)
  - [Using in real cases](#)

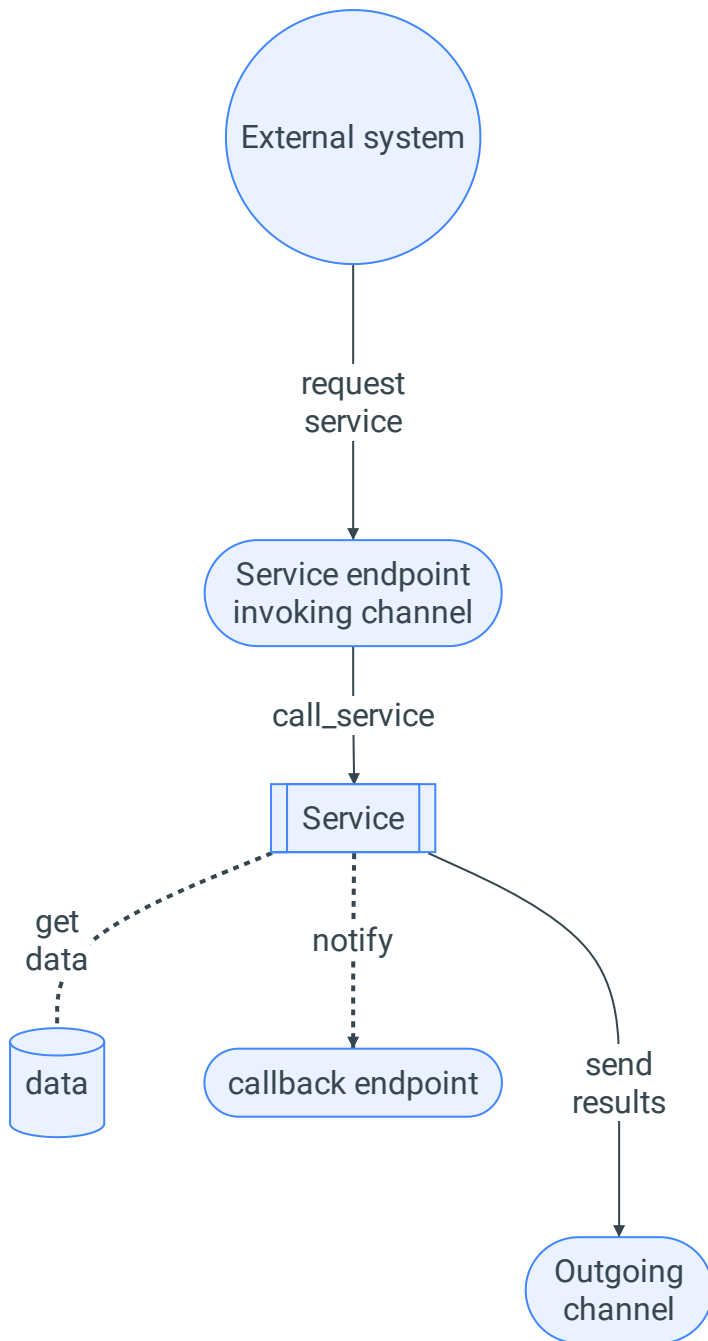
---

A service must be written in Python then deployed to **ARSRV** in order to be used.

## Service skeleton

A service has the following high level flow:

- defines a handler in order to be accessed by ARSRV
- it is invoked through a channel
- obtain any required parameters in order to properly do its job
- connects to another channel to read required input, or directly read it, or obtain it from other service, etc (here we are in Python)
- make the necessary transformation over obtained data
- connects to an outgoing channel to write computed output
- log any process details for future references and errors debugging



### Detailed operations

A service consists of a class which gives **its name**. This class must contain a method named `handler` each is called by ARSRV to execute the service.

```
# -*- coding: utf-8 -*-
# zato: ide-deploy=True

from zato.server.service import Service

class GetUserDetails(Service):
    """ Returns details of a user by the person's ID.
    """
    name = 'api.user.get-details'

    def handle(self):

        # For now, return static data only
        self.response.payload = {
            'user_name': 'John Doe',
            'user_type': 'SRT'
        }
```

The above example contains:

- first line is a comment for Python but will give important information to ARSRV ref service code serialization, useful to duplicate / copy the service on all servers (for load balancing and fail safe purposes).
- second line is a comment too but for Visual Code IDE add on to know that service should be automatically deployed at save.
- next is a Zato (part of ARSRV) library for right using services
- `self.response.payload` is the property where response must be returned from service processing; this property will be used by ARSRV as response of the service
- `name` will be the name of this service ad used by ARSRV
- the long comment (standard Python style for a multi line long string) will be used by ARSRV as service description

*NOTE. The response format could be anything you want, but for a better serial, serialization and conversion to output channel format, IT IS RECOMMENDED TO USE A DICTIONARY for response payload.*

## Deployment

In order to deploy this service the following methods could be used:

- directly from IDE if the corresponding extension was installed - this depends by IDE platform - VS Code has an already written extension
- putting it in directory `~/env/qs-1/server1/pickup/incoming/services` and will be loaded automatically by an ARSRV, server1 shown in path (recommend for automate deployment)
- upload from ARSRV administration console (Services > List > Upload...)

In all cases the deployment ARSRV will distribute the service on all cluster's servers.

## Using in real cases

In most cases will want to access this service by a request from other system. Therefore will be needed a channel (as endpoint) where to invoke the service and sending it data (pls remember that **anything that is outside ARSRV is 'linked' to ARSRV thru channel**).

There could be cases when want that the service to run automatically driven by a scheduler. As long as ARSRV has its own scheduler, there is not need a channel to invoke the service.

And finally, the service can be invoked by other external event, like a new file in a directory, an updated file, a change in a database, a new message in a queue, a mail, etc. These aspects are **subject to channels** and will be treated there.

To produce an usable result, of course, the service must be linked to a channel which will receive response.

---

Last update: August 23, 2023